

**SAINT JOHN'S ACADEMY**  
**SUMMER ASSIGNMENT (2019-2020)**  
**CLASS VII**

NOTE:- These assignments are to be done in separate answer sheets and submitted to the subject teachers on the first day when the school reopens.

**ENGLISH LANGUAGE**

Q1. Read the following passage carefully and answer the following question given below:

The satellite TV invasion is destroying our culture

1. The number of affirmative respondents works out to almost half the number of youngsters who took part in our survey, yet their arguments are a bit shaky.  
2. The one overwhelming reason put forth is that programmes beamed through the satellites are contradictory to traditional Indian values and that such programmes encourage us to ape western lifestyles. The naysayers state their case strongly and stand on firm ground. A culture that can be destroyed by the idiot box isn't worth processing in the first place, they reason. And there isn't that much difference between western programmes and ours any more. Other say that being exposed to their culture we revert unquestioningly to ours, appreciating it more than before. It keeps Indian in touch with what's happening around the world, it provides us with the much needed exposure and entertainment. And satellite TV's advent on the India skies even mobilised Doordarshan into action! And spread our culture overseas. One thinker reasons that our culture is an accumulated fusion of a number of influences, which in turn enhances our rich culture and so we are in the process of laying the foundation of a brand new culture.

1. Give an important reason for stating that satellite T.V. is destroying our culture.
2. What is the idea of those who are against the motion?
3. Give your views for or against the motion.
4. Find words in the passage which mean the same as the words given below:-
  - i) study
  - ii) copy
  - iii) merging
  - iv) collect

Q2. Make an attractive poster with a catchy slogan which includes the activities such as drawing, swimming, dancing, singing and drama in the Summer camp.

Q3. Do as directed:-

1. Allen is playing in the garden.  
(Change into Interrogative sentence)
2. The performance was beautiful.  
(Change into exclamatory sentence)
3. A \_\_\_\_\_ of puppies followed the lady from the temple.  
(Fill in the blank with a collective Noun)
4. \_\_\_\_\_ is always rewarded.  
(Fill in the blank with a collective Noun)
5. This pile of books is \_\_\_\_\_.  
(Fill in the blank with a possessive pronoun)
6. Yesterday was the \_\_\_\_\_ day of the year.  
(Fill in the blank with Adjective of degree)
7. Do you need \_\_\_\_\_ (some/ any) help.

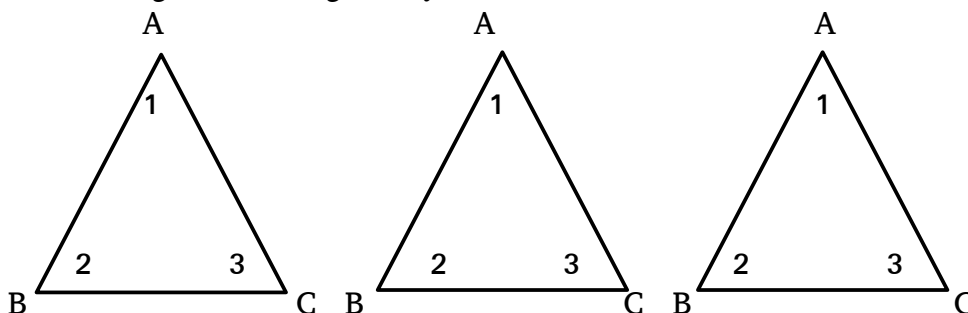
8. Painting the wow lovely so.  
(Rearrange the words to make an exclamatory sentence)
  9. Rahul plays best than Aman.  
(Correct the sentence)
  10. She has hurt \_\_\_\_\_.  
(Fill in with a Reflexive Pronoun)
- Q4. Imagine that you got a chance to meet your favourite cricket star. Write a diary entry and record all the special moments spent with him/ her.

### ENGLISH LITERATURE

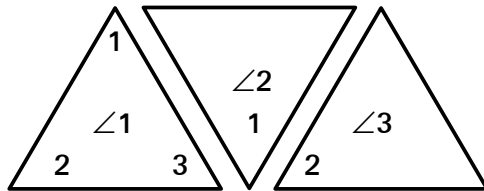
- Q.1 Give two meaning of each of the following words: Use any FOUR words from the given words in the sentences of your own:-
- |             |               |
|-------------|---------------|
| a) fierce   | e) castle     |
| b) delight  | f) decisively |
| c) disciple | g) barge      |
| d) twirling | h) tucked     |
- Q2. Write a composition about Manjula Parelkar. Begin it with the time when she requested her mother for some extra money, felt disheartened by what her father said, and end with being inspired by Richard Belanger. You may use this outline.  
Manjula – two fingers on each hand – wanted to learn painting – encouraged by her mother – father could not afford to spend on painting material – discouraged – Richard Belanger – developed confidence and the will to never give up.
- Q3. The poem ‘Govinda’s Disciple’ is written by Rabindranath Tagore. Write a short note in the life study of the poet, his achievements in the field of literature and also state what the poet is trying to convey through the poem, ‘Govinda’s Disciple’?
- Q4. Write a character sketch on the following:-  
The Giant Man

### MATHEMATICS

1. Which is the smallest number for ‘n’ so that  $50 + n$  may be a prime number?
2. Express each of the following numbers as the sum of three odd primes
  - i) 31
  - ii) 53
3. Fill in with the appropriate signs : ( +, -, x, ÷, = )
  - a)  $5 \square 6 \square 3 \square 2 = 8$
  - b)  $28 \square 4 \square 9 \square 16$
4. Cut three congruent triangles say  $\triangle ABC$



Arrange them as in figure.



What do you observe about  $\angle 1 + \angle 2 + \angle 3$  ?

5. Find the missing number

9	3	8
6	6	6
15	8	11
12	11	?

6. Write down a pair of integers whose

i) sum is -6

ii) difference is -6

7. With the help of an example show that the sum of an integer and its additive inverse is zero.
8. A person gains Rs.5 on product 'A' and loss Rs.2 on product B. If he sells 10 items of A and 6 items of B, find his profit or loss.
9. Describe the following sets in set builder form:
- i)  $\{-1, 0, 1\}$
- ii)  $\{12, 15, 18, 21, 24, 27, \dots, 39\}$
10. How much is -8 less than -2?

## PHYSICS

Q1. Calculate and complete the table given below:-

Object	Density	Mass	Volume
A	_____	4000	2
B	2000	1000	_____
C	8000	_____	4
D	_____	2000	4
E	_____	2500	5

Answer the following questions on the basis of table given above:-

- Which object has the highest mass?
- Which two objects could be made up of the same material?
- Which object will float on water?
- Explain the term Relative Density.

Q2. Name the type/ types of motion being performed by each of the following and explain

that respective motion -

- a) Earth around the Sun.
- b) Gas particles inside a Balloon
- c) Plucked string of a Guitar
- d) A Bus travelling from one city to another
- e) A spinning top

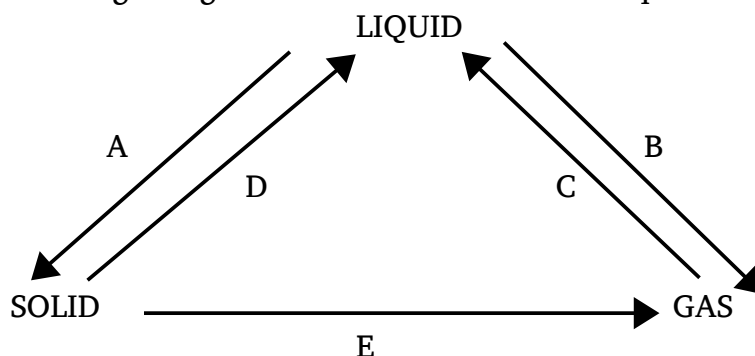
- Q3. i) What happens to the time period of a Simple Pendulum if -
- a) the amplitude is doubled
  - b) the gravity of a place decreased
  - c) the mass of the bob is increased
  - d) the length of pendulum increased
- ii) Also name the factors affecting the time period of a Simple pendulum using formula.
- Q4. Give reasons for the following cases -
- a) A moving car is said to be in translatory motion but a fan is not.
  - b) Density of almost all substances decrease on increasing temperature.
  - c) A boy of mass 50kg has same mass everywhere in universe but different weight?
  - d) A girl running around a circular track completed one round is said to have done zero displacement.

### CHEMISTRY

Q1. Give two examples of the following changes.

- |                       |                         |
|-----------------------|-------------------------|
| 1) Slow changes       | 6) Non periodic changes |
| 2) Reversible changes | 7) Undesirable changes  |
| 3) Periodic changes   | 8) Chemical changes     |
| 4) Desirable changes  | 9) Irreversible changes |
| 5) Physical changes   | 10) fast changes        |

Q2. Study the diagram given below and answer the questions that follow:-




Label the processes marked as A, B, C, D and E and explain them.

- Q3. Explain 'Adulteration'.
- (i) Give at least two reasons for the adulteration of food.
  - (ii) List the various adulterants used in pulses and cereals and their effects on health.


## BIOLOGY

- Q1. Give an account of the classes that come under the phylum Arthropoda. Write two characteristics features of each of the class and stick or draw pictures of the example of each of the class.
- Q2. (i) Collect a few weeds (at least five)  
(ii) Dry them in the folds of a newspaper for about a week or ten days. [ You may change the newspaper a couple of times?  
(iii) Paste these weeds on the file papers with the help of cellotape.  
(iv) Identify and write their names.  
(v) Find out as to how each weed has adapted itself to its environment, to prevent animals from feeding upon it and write about the same.

## HISTORY & CIVICS

- Q1. Have you ever visited a church? Mention any four famous churches of the World with their significance. Also paste pictures related to it.
- Q2. India has Democratic Form of Government. What do you understand by the Parliamentary form of Government. What are Elections? Explain the importance of elections in India. Name two Political parties and draw their symbols.
- Q3. a) Identify the picture.  
b) Name the period in which it was constructed?  
c) Which ruler started the construction of the monument and who completed it.  
d) Name the ruler who added the fifth or the last floor to it.  
e) Explain its features.
- 
- Q4. Monasteries served as centres of education in Medieval Europe. Name the two Christian Monasteries which evolved into internationally renowned Universities. Which famous University in ancient India evolved from a Buddhist monastery? Write the similarities between the two and paste pictures in support of your answer.

## GEOGRAPHY

- Q1. Refer to the given topographical map 45D\7 given in your text book and answer the following questions.
1. What is the scale of the given map?
  2. Give the four figure grid reference of the following-
    - (a) Open scrub near Rampura.
    - (b) Contour near Karja.
    - (c)  364
    - (d) Town Chitrasani
  3. Measure the straight line distance between Sangla and Antroli
  4. Measure the length of Balram Nadi in Kms. Using a thread.
  5. Explain 'scale'
  6. What does a 'yellow' and 'red' color represent in a toposheet
  7. What is the area of a given toposheet.

- Q2. Identify the following conventional symbols .Draw and colour them .
- |                        |                  |                                  |
|------------------------|------------------|----------------------------------|
| 1. Temple              | 2. metalled road | 3. Nucleated settlement          |
| 4. Disappearing stream | 5. Meander       | 6. Dry tank                      |
| 7. Causeway            | 8. Contours      | 9. Open scrub 10. deciduous tree |
- Q3. Explain Aurora Australis Phenomenon. What are the conditions required for its formation. (Paste colourful pictures)
- Q4. Collect pictures and information on recently found black hole.

### COMPUTER SCIENCE

- Q1. List the various reasons why backups are made.
- Q2. Explain any two output and two input devices and paste the pictures.
- Q3. What is Onboard program? Write the steps to open onboard program.
- Q4. Define the following BASIC.256 commands with syntax and examples:  
 a) rect                      b) circle
- Q5. Write the Troubleshooting tips for the following computer problems:  
 a) keyboard is not working  
 b) Computer is not turning ON  
 c) Mouse is not working

### HINDI

- iz"u f& fn, x, "kCnksa ds rRle #i fyf[k,&  
 vf{k ] vaxq'B ] vks'B ] b{kq
- iz"u „& fn, x, "kCnksa ds milxZ vyx djds fyf[k,&  
 vfHkys[k ] vfrfjDr ] izfrfnu ] ijke"kZ
- iz"u ...& /kkrq ,oa izR;; dks tksM+dj u;k "kCn cukb,&  
 i<+ \$ vkbZ ] rSj \$ vkd ] [ksy \$ vkM+h ]  
 ?kcjk \$ vkgV
- iz"u †& izR;sd "kCn ls nks & nks ,sls okD; cukb, ftlls muds  
 fHkUu & fHkUu vFkZ Li'V gksa&  
 vad ] vacj
- iz"u ‡& okD;ka"k ds fy, ,d "kCn fyf[k,&  
 $\frac{1}{4}d\frac{1}{2}$  ftlesa /kS;Z u gksa  
 $\frac{1}{4}[k\frac{1}{2}$  fcuk fdlh fu;e dsA
- iz"u ^& egkHkkjr ds ;ksn~/kkvksa ds uke] muds fp=ksa ds lkFk  
 mudh dqN fo"ks'krk,i crkb,A
- iz"u %o& ,dkxzrk dh lQyrk dk Js'B ekxZ gS mnkgj.k nsrs gq,  
 lfoLrkj fyf[k,A

**END**